

**AUX**  
AIR CONDITIONER

20  
24

AUX  
JORDAN  
PRODUCT CATALOGUE



[www.auxjo.com](http://www.auxjo.com)



Official website



[www.auxair.com](http://www.auxair.com)



AUX



<https://m.facebook.com/profile.php?mibextid=kFxxJD>



AUXRAC



<https://www.linkedin.com/company/aux-rac/?viewAsMember=true>

NINGBO AUX IMP.&EXP.COLTD.

Add: No. 1517, East Section of Yincheng Avenue, Jiangshan,  
Yinzhou, Ningbo, Zhejiang, P. R. China  
Tel: +86-574-88220564

Kingdom Jewel is an AUX Air Conditioner agent in Jordan

[www.kingdomjewel.com.jo](http://www.kingdomjewel.com.jo)

0790322222

# GROUP PROFILE

- 1 ● Established in 1986, AUX Group is an enterprise group which covers several industries: home appliances, power utilization, power distribution, new energy, medical service. For many years it ranked China's top 500 enterprises.
- 2 ● In 2023, the group sales reached RMB 86 billion, with total assets of RMB 70.2 billion, It has over 30,000 employees, and 12 manufacturing bases in Ningbo(3) , Nanchang, Tianjin, Ma'anshan, Zhengzhou, Wuhu, Brazil, Indonesia, Thailand and Poland, 6 R & D centers. AUX is a leading producer of Smart Meter and Power Box in its sector. Currently, it has invested and operated 42 medical institutions.
- 3 ● It owns 2 listed companies (601567.SH, 02080.HK). As a National-Recognized Enterprise Technology Center, a Technology Innovation Model Enterprise, National Intellectual Property Demonstration Enterprise and a National Post-doctoral Workstation, it owns two globally famous brands: AUX and Sanxing, which worth over RMB 51 billion.
- 4 ● When AUX is working on its development, it also cares about performing its social responsibilities. In the past years, it has donated RMB 309 million in total to various public programs, such as the field of targeted poverty alleviation, education, disaster relief and environment protection.
- 5 ● In the new era, aiming to become a world-class enterprise, AUX will keep carrying out the mission of "Creating an intelligent living environment and Cultivating great talents", and work hard to achieve the strategic goal of "100 billion market value, 100 billion scale and 10 billion profits"

## INTELLIGENT MANUFACTURING

Industries covering home appliances, electrical equipment, medical service, real estate and investment, etc.

In 2022, group revenue Of RMB 81 billion, over 30,000 employees

Public welfare donation RMB 309 million

12 Manufacturing Bases

6 R&D Centers



Exported to 123 countries and regions , over 400 cooperative customers



## AWARDS



Leading Comfortable & Healthy Brand



Innovation Excellent Case Award



RED-TOP Award



IF DESIGN AWARD



AWE Excellent Product Award



Quality Benchmark Brand

## HONOR



Demonstration enterprise



Gold award



Pilot enterprise



Vice chairman unit

## CERTIFICATION



CE



EAC



AHRI



ETL



TISI



CB



ESMA



SASO



ROHS



EUROVENT



ISO



ICC

**1986**

**Startup from Longguan Town**

At the age of 25, Zheng Jianjiang volunteered to contract the Longguan Clock&Watch Parts Factory, which was on the verge of bankruptcy, and started his business.

**1994**

**Entered the air-conditioning industry and created AUX brand**

With an expansion of 1000 times, AUX made its way to the top 4 in the air-conditioning industry, and ranks third in China's air-conditioning industry.

**1989**

**Entered the instrument industry and founded Sanxing brand later**

With an expansion of 500 times, we claimed the crown of power meters nationwide, and are now a leading integrated solution provider of intelligent power distribution.

**2000**

**Entered the real estate industry**

We have our network cover more than ten cities and are now a comprehensive land agent of diversified business models.

**2006**

**Ningbo Mingzhou Hospital (later renamed as Zhejiang University Mingzhou Hospital) opened**

We started to extend our business into medical industry and became a pioneer of non-governmental hospitals and a cross-industry representative with more than ten years of efforts in the path characterized by private-capital hospital running.

**2009**

**Entered the investment industry**

We established Huijin Micro-credit Company and jointly held shares in 2 banks.

**2011**

**Sanxing Electric (601567)**

It was listed in the main board of Shanghai Stock Exchange and was later renamed as "Sanxing Medical".

**2012**

**Set up R&D Center successively in Hangzhou and Ningbo**

These promoted the technical research and application of intelligent power grid and intelligent household electrical appliances.

**2013**

**Established a financial center in Shanghai**

The center carried out financial leasing business.

**2014**

**Set up a medical group**

It comprehensively deployed the healthcare strategy.

**2015**

**Established overseas factories in Brazil and Indonesia**

It worked in overseas real estate development in Australia and was renamed as AUX International after merger with Hong Kong stocks (02080.HK).

**2016**

**Leaped to No. 3 in air conditioner production scale**

We newly built a production base for the export of intelligent household electrical appliances.

**2017**

**Newly built the intelligent household air conditioning industrial park in Ma'anshan**

We advanced towards kitchen appliance industry together with the expansion of hospitals and medical healthcare.

**2018**

**Launched Strategy X to build intelligent household appliance production bases in Thailand and Zhengzhou**

We aimed to build the R&D Center in Japan into a global R&D highland for household electrical appliances.

**2019**

**Initiating in the industry**

It initiated the mode of "Internet direct selling of air conditioners". The Thailand Base was officially completed in August.

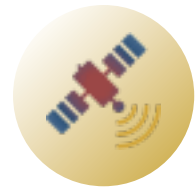
**STARTUP & DEVELOPMENT  
(1986-2019)**

# 2020-PRESENT

Facing the new era, AUX adheres to the corporate mission of "creating intelligent life and cultivating outstanding talents" and aspires to become a world-famous enterprise.



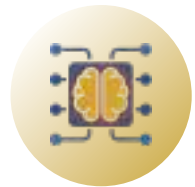
Responsibility



Quality



Forging ahead



Innovation



Humanitarian assistance

2020.04  
Commending the Pioneers in the Hubei Aid Action



Products Upgrading

2020.06  
Net Launch Event of AUX Detachable-and-Removeable Mechanism A/C



Seminar Organiser

2020.12  
Seminar on "Innovation Boosts High-Quality Development of Manufacturing"



Official cooperation

2021.02  
Official exclusive supplier of air conditioner for the 19th Asian Games Hangzhou 2022



Guaranteed Quality

2022.11  
Cooperator of China Polar Research



Stylish Image

2023.07  
International Home Appliance Expo (Ningbo, China)



Keeping Forging Ahead

2023.09  
Top 500 Enterprise in China



Outstanding in Expo

2023.10  
The 134th Canton Fair



Strong Alliance


2023.11  
Alliance with Panasonic in Compressor

# CONTENTS

## JORDAN CATALOGUE

## CONTENTS


### C-SERIES

Series	Appearance	Refrigerant	Type	12K	18K	24K	30K	36K
C-SERIES		R32	50HZ	●	●	●	●	●

### H-SERIES

Series	Appearance	Refrigerant	Type	09K	12K	18K	24K
H-SERIES		R32	50HZ			●	●

### J-SERIES

Series	Appearance	Refrigerant	Type	09K	12K	18K	24K
J-SERIES		R32	50HZ			●	●

### Wall mounted

---

C-series	.....	P01-12
H-series	.....	P13-18
J-series	.....	P19-24



# C-SERIES



Size:mm(12k)

	W	D	H
CA12K	774	298	202
CC12K	834	299	202

▼ OUTDOOR UNIT



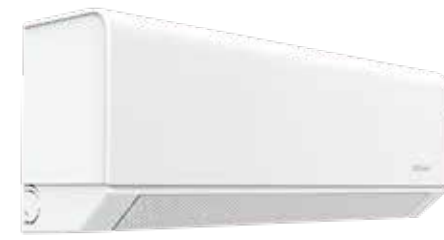
▼ REMOTE CONTROLLER



## APPEARANCE



## APPEARANCE(OPTIONAL)



CA



CC WHITE



# MAIN SELLING POINT

## MICRO VENT

The air guide near closed state, and wind out from the micro vents of the air guide, reducing the wind speed and preventing blowing to person directly



## FULL DC INVERTER COMPRESSOR

Start from -30°C low temperature to 60°C high temperature, not afraid of cold and heat. Low frequency operation and energy saving



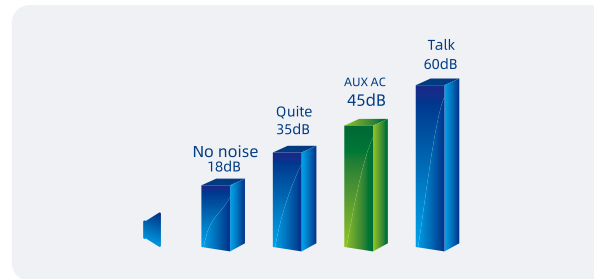
## WIFI CONTROL

Develop the leading technology and intelligently connect with Mobile phone, achieving remote control of the air conditioner.



## SUPER QUIET

Through the air tunnel optimization technology and equipped with big diameter fan and high efficiency PG motor, which help the indoor unit deliver a better air distribution and air flow with noise low to 18dB, providing you comfortable sleeping environment



## 4D WIND

Air guide blow from up-down and left-right with 2 step motors



## 30S COOLING/ 60S HEATING

Compressor starts at high frequency, quickly improving cooling/heating efficiency





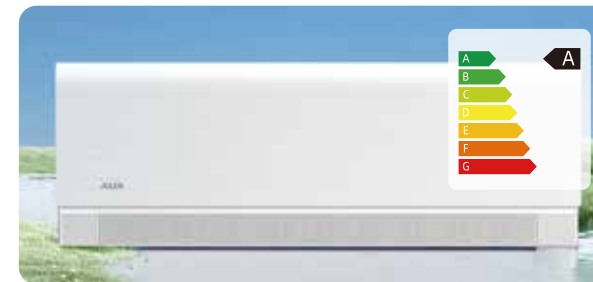
## EASY INSTALLATION

Quick positioning (size board), saving 30% time of installation



## ECO II MODE

Energy saving and environmental protection



## IFEEL

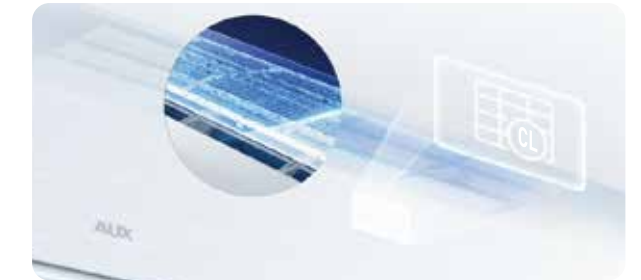
OPTIONAL

The remote control is equipped with a temperature sensor that can obtain the temperature around the user and provide feedback to the air conditioner, thereby adjusting the temperature around the user.



## FILTER CLEANING REMINDER

After working 500 hours, 【CL】 code on the display to remind the user to clean the filter (which needs to be manually removed by the user) and use the self-cleaning function



## AUTO-RESTART

When the power off, the system automatically records the mode before power outage, and automatically returns to the original mode after power on



## LONG-DISTANCE AIR SUPPLY

Long-distance air supply, fin guide, wider and further air supply range



CATEGORY	DETAIL	FUNCTION	STANDARD	OPTIONAL
PERFORMANCE	MODE	Cooling	●	
		Heating	●	
		Automatic	●	
		Drying/dehumidification	●	
		Ventilation	●	
	sleep	●		
	RUN	High-temperature refrigeration	●	
		low-temperature heating	●	
Wide temperature operation		●		
		Wide voltage operation	●	

CATEGORY	DETAIL	FUNCTION	STANDARD	OPTIONAL
ENERGY CONSERVATION	COMMON	ECO II	●	
		0.5 W standby	●	

CATEGORY	DETAIL	FUNCTION	STANDARD	OPTIONAL
HEALTHY	STERILIZATION	Cold plasma		●
		Anion		●
		Anti-explosion anion		●
		UV sterilization		●
	SELF-CLEANING	Automatic washing	●	
		Oxygen production		●
	RESISTANCE ROT	Dry and anti-mold	●	
	FILTER SCREEN	Mosquito proof filter screen	●	
		Silver ion filter screen		●
		Vitamin C mite removal filter screen		●
		Sterilization/anti-microbial filter screen		●
		Activated carbon filter screen		●
		Enzyme/HEPA filter screen		●
		Tricolor sterilization filter screen (red, yellow, black)		●
		Tricolor sterilization filter screen (blue, white, green)		●
		PM2.5 removal filter screen		●
Anti-formaldehyde filter screen			●	

CATEGORY	DETAIL	FUNCTION	STANDARD	OPTIONAL
COMFORT	WIND CONTROL	No-draft mode (gentle air mode)		●
		COSY		●
		Anti-cold air	●	
		Seven-speed wind (medium high, medium low)	●	
		Remote air supply (7.5 m)	●	
		Up-down swing wing	●	
		Left-right swing wind	●	
		Stationary swing wind	●	
	Large wind volume		●	
	TEMPERATURE CONTROL	Rapid refrigeration 30s/heating 60s	●	
	SOUND CONTROL	8°C heating/8°C Constant temperature 8°C		●
	LIGHT CONTROL	Mute remote control	●	
		Screen display	●	

## STANDARD/ OPTIONAL

CATEGORY	DETAIL	FUNCTION	STANDARD	OPTIONAL	
INTELLIGENT	TEMPERATURE LIMITATION	Temperature range adjustment	●		
		Remote control temperature limitation	●		
		Switch to ambient temperature	●		
		°C/°F switching		●	
	CONTROLS	USB WiFi			●
		WiFi integrated WiFi			●
		Bus controller			●
		Voice panel/voice control	●		
		radar			●
	THOUGHTFUL CAREFUL	on-off			●
		iFavor			●
		iFeel			●
		Child lock	●		
		timing	●		
	POWER LIMITATION	Power-off memory	●		
		Intelligent power limiting(WIFI)			●
	OTHER	Remote control power limiting			●
		Intelligent preheating	●		
		Intelligent defrosting	●		
		Forced defrosting	●		
Self-diagnosis		●			
Filter screen cleaning reminder		●			
					●

CATEGORY	DETAIL	FUNCTION	STANDARD	OPTIONAL
RELIABILITY	ELECTRIC HEATING	Chassis electrical heating		●
		Fluorine deficiency protection/Refrigerant leakage protection	●	
	OTHER	5VA electric control box fireproofing grade	●	
		Anti-corrosion of evaporator & condenser		●
		PCB three-proofing paint		●
		Golden fin		●
Outdoor unit shock absorber		●		

CATEGORY	DETAIL	FUNCTION	STANDARD	OPTIONAL
AFTER SALE	DISASSEMBLY AND ASSEMBLY	Removable jaw	●	
		Removable main panel (PCB plug-in)	●	
		Fluorine absorption mode		●
		Low-temperature cooling (-10°C)		●
		E-installation hanging plate		●
		Hanging plate level		●

# PRODUCT SPECIFICATION SHEET

AUX SPLIT ROOM AIR CONDITIONER			NUMBER	CA-12K	CA-18K
Items					
Nameplate Parameter	Rated Capacity	Cooling	BtuKw	3500 (800-4200)	7300 (1800-7400)
		Heating	W	3850 (1000-4200)	7300 (1800-7400)
	Rated Power Consumption	Cooling	W	1180(100-1600)	2200 (230-2700)
		Heating	W	1100(300-1600)	2200 (230-2530)
	Rated Running Current	Cooling	A	5.5(0.7-7.8)	10 (1.0-12)
		Heating	A	5.9(1.5-8.0)	10 (1.0-11)
	Max. Input Power		W	1900	3400
	Max. Input Current		A	9.5	16
	EER Cooling		(Btu/h)/W	SEER 7.1	6.5
	COP Heating		W/W	SCOP 4.1	4.1
	Power supply source		V/Ph/Hz	220-240V-1-50Hz	220-240V~/50Hz
	Refrigerant			R32	R32
	Air Flow Volume		m3/h	650	1300
	Noise level		dB (A)	53	63
	Noise level		dB (A)	62	66
Indoor unit weight (Net)		Kg	8	13	
Outdoor unit weight (Net)		Kg	22	39	
Indoor unit configuration	Dimension	Net Dimension(WidthxDepthxHeight)	mm	774x298x202	1145x332x230
		Packing Dimension(WidthxDepthxHeight)	mm	831x371x282	1210x400x327
Outdoor unit configuration	Dimension	Net Dimension(WidthxDepthxHeight)	mm	705x530x279	900x700x350
		Packing Dimension(WidthxDepthxHeight)	mm	825x595x345	1020x770x430
Container Loading 20/40/40HC			Units	111/231/276	40/109/139

AUX SPLIT ROOM AIR CONDITIONER			NUMBER	CA-24K
Items				
Nameplate Parameter	Rated Capacity	Cooling	BtuKw	5400(1300-5900)
		Heating	W	5600(1300-6000)
	Rated Power Consumption	Cooling	W	1650(290-2100)
		Heating	W	1550(250-1800)
	Rated Running Current	Cooling	A	7.3(2.2-9.3)
		Heating	A	6.9(2.0-8.0)
	Max. Input Power		W	2400
	Max. Input Current		A	12
	EER Cooling		(Btu/h)/W	3.27
	COP Heating		W/W	3.61
	Power supply source		V/Ph/Hz	220-240V~/50Hz
	Refrigerant			R32
	Air Flow Volume		m3/h	950
	Noise level		dB (A)	58
	Noise level		dB (A)	62
Indoor unit weight (Net)		Kg	11	
Outdoor unit weight (Net)		Kg	28.5	
Indoor unit configuration	Dimension	Net Dimension(WidthxDepthxHeight)	mm	997x312x222
		Packing Dimension(WidthxDepthxHeight)	mm	1070x385x327
Outdoor unit configuration	Dimension	Net Dimension(WidthxDepthxHeight)	mm	1.8PA-785x555x300
		Packing Dimension(WidthxDepthxHeight)	mm	888x367x590
Container Loading 20/40/40HC			Units	84/176/202

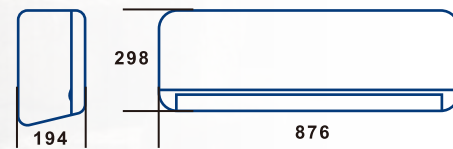
# PRODUCT SPECIFICATION SHEET

AUX SPLIT ROOM AIR CONDITIONER			NUMBER	CC-12K	CC-18K
Items					
Nameplate Parameter	Rated Capacity	Cooling	BtuKw	3500(650-4100)	5400(1300-5900)
		Heating	W	4200(930-4200)	5800(1300-6100)
	Rated Power Consumption	Cooling	W	870(130-1550)	1430(290-1950)
		Heating	W	1060(230-1300)	1330(250-1800)
	Rated Running Current	Cooling	A	4.2(0.56-5.8)	6.4(2.2-6.8)
		Heating	A	4.8(1.0-6.3)	6.1(2.0-8.0)
	Max. Input Power		W	1500	2400
	Max. Input Current		A	9	12
	EER Cooling		(Btu/h)/W	8.5	SEER8.7
	COP Heating		W/W	4.6	SCOP4.6
	Power supply source		V/Ph/Hz	220-240V~/50Hz	220-240V~/50Hz
	Refrigerant			R32	R32
	Air Flow Volume		m3/h	650	1000
	Noise level		dB (A)	56	56
	Noise level		dB (A)	62	63
Indoor unit weight (Net )		Kg	8.5	13.5	
Outdoor unit weight (Net )		Kg	24.5	28.5	
Indoor unit configuration	Dimension	Net Dimension(WidthxDepthxHeight)	mm	834x299x202	1140x332x230
		Packing Dimension(WidthxDepthxHeight)	mm	891x371x282	1210x400x327
Outdoor unit configuration	Dimension	Net Dimension(WidthxDepthxHeight)	mm	705x279x530	785x300x555
		Packing Dimension(WidthxDepthxHeight)	mm	825x345x595	903x382x615
Container Loading 20/40/40HC			Units	108/228/270	79/162/190

AUX SPLIT ROOM AIR CONDITIONER			NUMBER	CC-24K
Items				
Nameplate Parameter	Rated Capacity	Cooling	BtuKw	7300(1800-7400)
		Heating	W	7400(1800-8000)
	Rated Power Consumption	Cooling	W	1700(230-2300)
		Heating	W	2300(230-2530)
	Rated Running Current	Cooling	A	7.9(1-10)
		Heating	A	10.5(1-11)
	Max. Input Power		W	3200
	Max. Input Current		A	16
	EER Cooling		(Btu/h)/W	8.7
	COP Heating		W/W	4.6
	Power supply source		V/Ph/Hz	220-240/50
	Refrigerant			R32
	Air Flow Volume		m3/h	1300
	Noise level		dB (A)	62
	Noise level		dB (A)	65
Indoor unit weight (Net )		Kg	14	
Outdoor unit weight (Net )		Kg	41	
Indoor unit configuration	Dimension	Net Dimension(WidthxDepthxHeight)	mm	1145x331x230
		Packing Dimension(WidthxDepthxHeight)	mm	1210x400x327
Outdoor unit configuration	Dimension	Net Dimension(WidthxDepthxHeight)	mm	900x700x350
		Packing Dimension(WidthxDepthxHeight)	mm	1015x762x425
Container Loading 20/40/40HC			Units	55/120/139



Size:mm(12k)



▼ OUTDOOR UNIT



**J-SERIES**

## APPEARANCE



JP

## DETAILS



■ Optional ■ Standard

- |                           |                           |                       |                      |                                |
|---------------------------|---------------------------|-----------------------|----------------------|--------------------------------|
| Hydrophilic Aluminium Fin | Self-Cleaning             | Sleep Mode            | Anti-Fungus Function | Anti-Cold-Air (Heat Pump Only) |
| Self-diagnosis Function   | Powerful Dehumidification | Super EMC performance | Anti-Rust Cabinet    | Internal thread Copper Piping  |
| Timer                     | iFeel                     | iFavor                | Golden Fin           | Bio Filter                     |
| Silver Ion Filter         | Ionizer                   | Auto-Restart          |                      |                                |

# MAIN SELLING POINT

## LONG-DISTANCE AIR SUPPLY

Long-distance air supply, fin guide, wider and further air supply range



## FIFTH-GENERATION AUTOMATIC CLEANING

Newly upgraded, 6-step water washing more thoroughly, in addition to the 4 major germs, the sterilization rate of 99.9%



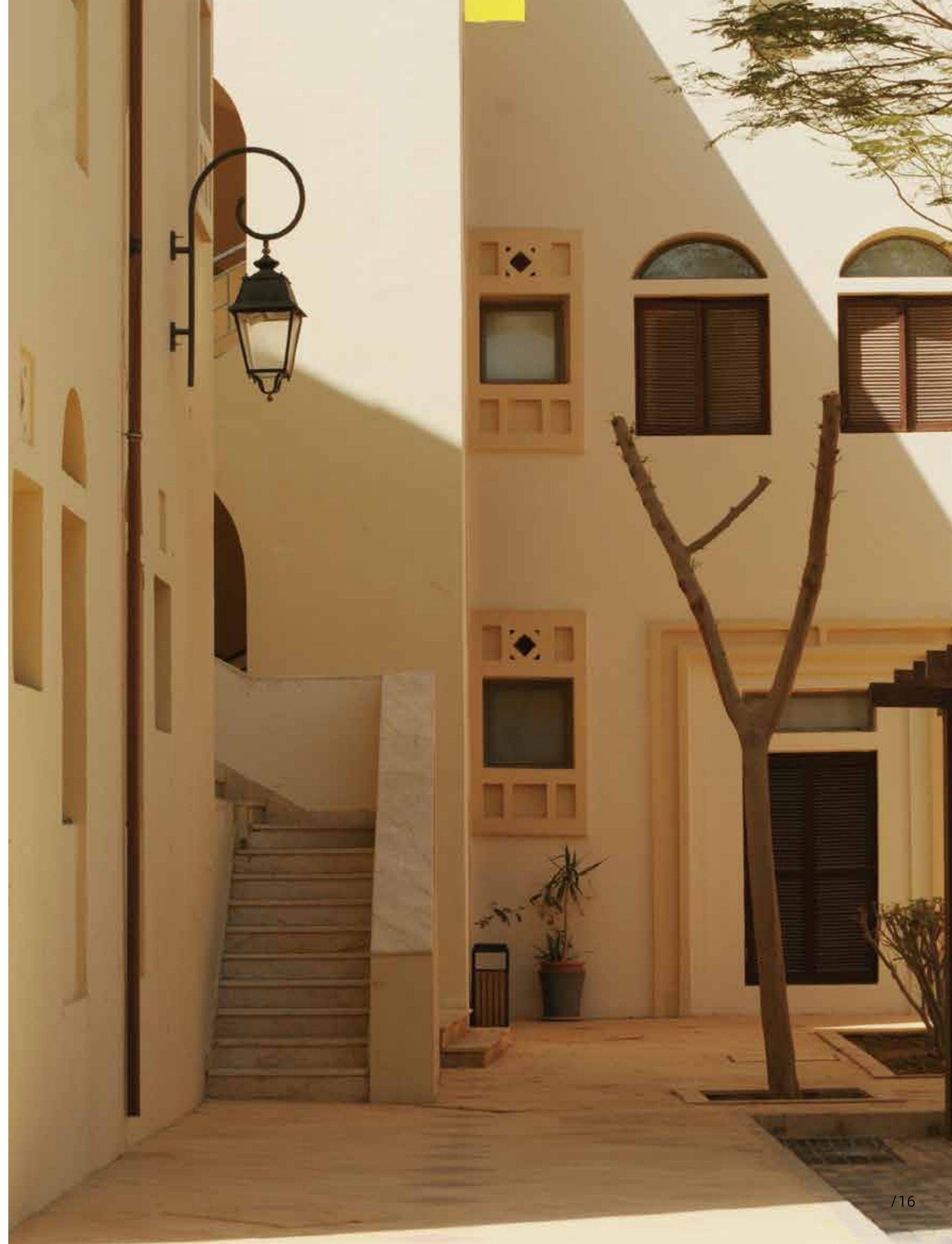
## EASY INSTALLATION

Detachable underjaw and plate support for large operation space. The installation efficiency is greatly improved, saving 20% of installation time



## 30S COOLING/ 60S HEATING

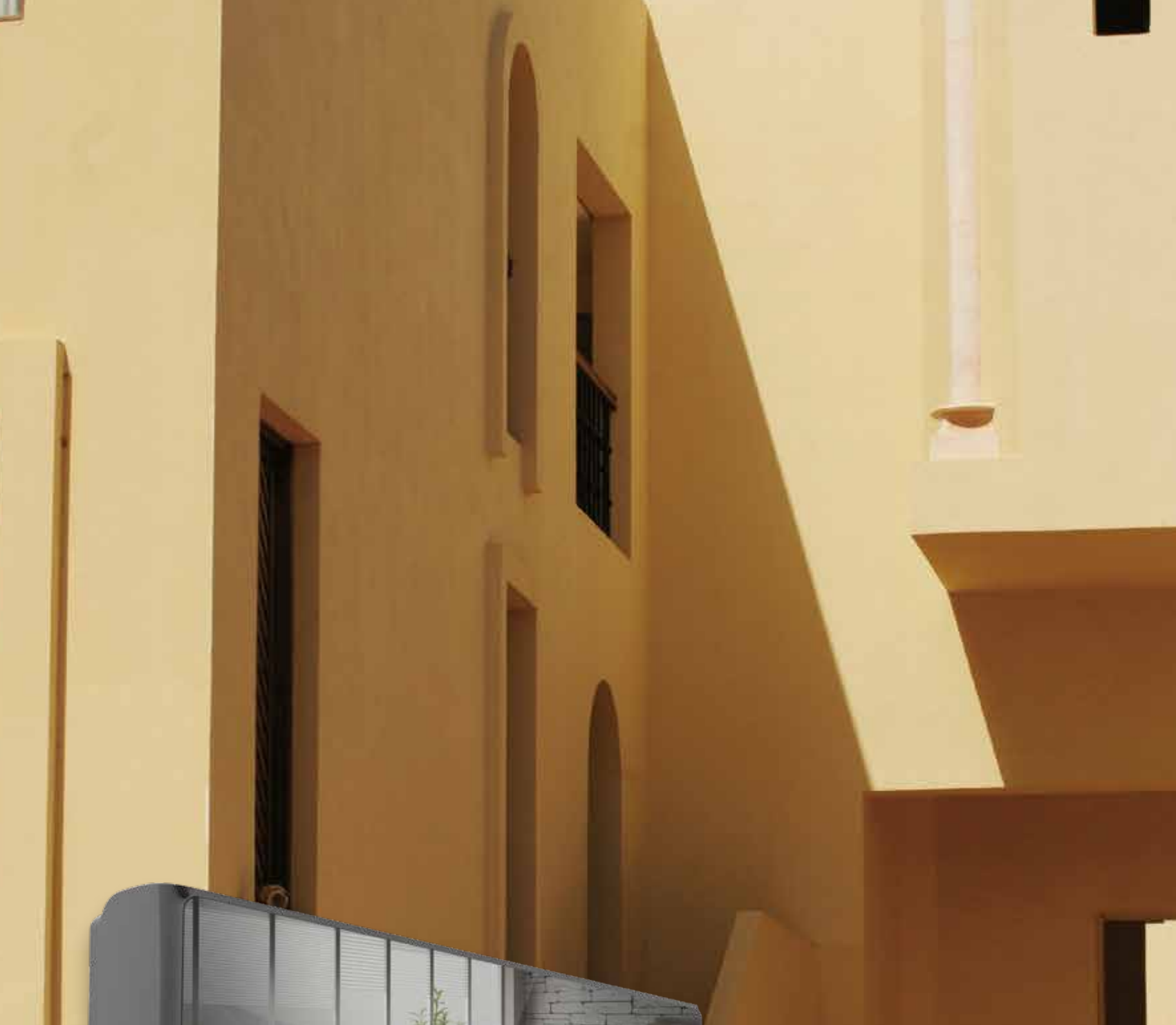
Compressor starts at high frequency, quickly improving cooling/heating efficiency



# PRODUCT SPECIFICATION SHEET

AUX SPLIT ROOM AIR CONDITIONER			NUMBER	18K
Items				
Nameplate Parameter	Rated Capacity	Cooling	KW	5.3(1.3-5.7)
		Heating	KW	5.3(1.3-5.5)
		Dehumidifying	Kg/h	1.86
	Rated Power Consumption	Cooling	KW	1.65(0.29-2.1)
		Heating	KW	1.47(0.25-1.8)
	Rated Running Current	Cooling	A	7.8(2.2-9.3)
		Heating	A	6.5(2.0-8.0)
	Max. Input Power		W	2500
	Max. Input Current		A	12
	SEER Cooling		W/W	6.5
	SCOP Heating		W/W	4.0
	Refrigerant		/	R32
	Max. Discharge Pressure		Mpa	4.3
	Max. Suction Pressure		Mpa	2.5
	Air Flow Volume		m3/h	850
	Noise level		dB (A)	57
	Noise level		dB (A)	62
Indoor unit weight (Net)		Kg	11	
Outdoor unit weight (Net)		Kg	27	
Indoor unit configuration	Dimension	Net Dimension(WidthxDepthxHeight)	mm	50J-940×316×224
		Packing Dimension(WidthxDepthxHeight)	mm	1010×385×307
Outdoor unit configuration	Dimension	Net Dimension(WidthxDepthxHeight)	mm	1.8PA-785×300×555
		Packing Dimension(WidthxDepthxHeight)	mm	903×382×615
Container Loading 20/40/40HC			Units	96/180/208

AUX SPLIT ROOM AIR CONDITIONER			NUMBER	24K
Items				
Nameplate Parameter	Rated Capacity	Cooling	KW	6700 (1800-7400)
		Heating	KW	7200 (1800-8200)
		Dehumidifying	Kg/h	2.5
	Rated Power Consumption	Cooling	KW	2200 (230-2760)
		Heating	KW	2200 (230-2530)
	Rated Running Current	Cooling	A	10 (1-12)
		Heating	A	9.5 (1-11)
	Max. Input Power		W	400
	Max. Input Current		A	16
	SEER Cooling		W/W	6.5
	SCOP Heating		W/W	4.0
	Refrigerant		/	R32
	Max. Discharge Pressure		Mpa	4.3
	Max. Suction Pressure		Mpa	2.5
	Air Flow Volume		m3/h	1300
	Noise level		dB (A)	63
	Noise level		dB (A)	66
Indoor unit weight (Net)		Kg	14	
Outdoor unit weight (Net)		Kg	49	
Indoor unit configuration	Dimension	Net Dimension(WidthxDepthxHeight)	mm	1132×330×232
		Packing Dimension(WidthxDepthxHeight)	mm	1205×400×317
Outdoor unit configuration	Dimension	Net Dimension(WidthxDepthxHeight)	mm	900×700×350
		Packing Dimension(WidthxDepthxHeight)	mm	1020×770×430
Container Loading 20/40/40HC			Units	55/120/138



# H-SERIES

## APPEARANCE



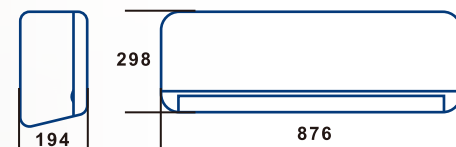
HE-BLACK



HE-GLODEN



Size:mm(12k)



▼ OUTDOOR UNIT



■ Optional ■ Standard

- |                           |                           |                       |                      |                                |
|---------------------------|---------------------------|-----------------------|----------------------|--------------------------------|
| Hydrophilic Aluminium Fin | Self-Cleaning             | Sleep Mode            | Anti-Fungus Function | Anti-Cold-Air (Heat Pump Only) |
| Self-diagnosis Function   | Powerful Dehumidification | Super EMC performance | Anti-Rust Cabinet    | Internal thread Copper Piping  |
| Timer                     | iFeel                     | iFavor                | Golden Fin           | Bio Filter                     |
| Silver Ion Filter         | Ionizer                   | Auto-Restart          |                      |                                |

# MAIN SELLING POINT



## LONG-DISTANCE AIR SUPPLY

Long-distance air supply, fin guide, wider and further air supply range



## FIFTH-GENERATION AUTOMATIC CLEANING

Newly upgraded, 6-step water washing more thoroughly, in addition to the 4 major germs, the sterilization rate of 99.9%



## EASY INSTALLATION

Detachable underjaw and plate support for large operation space. The installation efficiency is greatly improved, saving 20% of installation time



## 30S COOLING/ 60S HEATING

Compressor starts at high frequency, quickly improving cooling/heating efficiency



# PRODUCT SPECIFICATION SHEET

AUX SPLIT ROOM AIR CONDITIONER		NUMBER	18K	
Items				
Nameplate Parameter	Rated Capacity	Cooling	KW	5.3(1.3-5.7)
		Heating	KW	5.3(1.3-5.5)
		Dehumidifying	Kg/h	1.86
	Rated Power Consumption	Cooling	KW	1.65(0.29-2.1)
		Heating	KW	1.47(0.25-1.8)
	Rated Running Current	Cooling	A	7.8(2.2-9.3)
		Heating	A	6.5(2.0-8.0)
	Max. Input Power		W	2500
	Max. Input Current		A	12
	SEER Cooling		W/W	6.5
	SCOP Heating		W/W	4.0
	Refrigerant		/	R32
	Max. Discharge Pressure		Mpa	4.3
	Max. Suction Pressure		Mpa	2.5
	Air Flow Volume		m3/h	850
	Noise level		dB (A)	57
	Noise level		dB (A)	62
	Indoor unit weight (Net)		Kg	11
Outdoor unit weight (Net)		Kg	2	
Indoor unit configuration	Dimension	Net Dimension(WidthxDepthxHeight)	mm	50H-936×316×221
		Packing Dimension(WidthxDepthxHeight)	mm	1010×385×3077
Outdoor unit configuration	Dimension	Net Dimension(WidthxDepthxHeight)	mm	1.8PA-785×300×555
		Packing Dimension(WidthxDepthxHeight)	mm	903×382×615
Container Loading 20/40/40HC		Units	96/180/208	

AUX SPLIT ROOM AIR CONDITIONER		NUMBER	24K	
Items				
Nameplate Parameter	Rated Capacity	Cooling	KW	6700 (1800-7400)
		Heating	KW	7200 (1800-8200)
		Dehumidifying	Kg/h	2.5
	Rated Power Consumption	Cooling	KW	2200 (230-2760)
		Heating	KW	2200 (230-2530)
	Rated Running Current	Cooling	A	10 (1-12)
		Heating	A	9.5 (1-11)
	Max. Input Power		W	3400
	Max. Input Current		A	16
	SEER Cooling		W/W	6.5
	SCOP Heating		W/W	4.0
	Refrigerant		/	R32
	Max. Discharge Pressure		Mpa	4.3
	Max. Suction Pressure		Mpa	2.5
	Air Flow Volume		m3/h	1300
	Noise level		dB (A)	63
	Noise level		dB (A)	66
	Indoor unit weight (Net)		Kg	14
Outdoor unit weight (Net)		Kg	39	
Indoor unit configuration	Dimension	Net Dimension(WidthxDepthxHeight)	mm	1121×329×231
		Packing Dimension(WidthxDepthxHeight)	mm	1205×400×317
Outdoor unit configuration	Dimension	Net Dimension(WidthxDepthxHeight)	mm	900×700×350
		Packing Dimension(WidthxDepthxHeight)	mm	1020×770×430
Container Loading 20/40/40HC		Units	55/120/138	